

Directions from Santa Bárbara church to Norte:

At the bus stop in Santa Bárbara (about 500 m north) is the wooden sign to Norte. It's about 3.5 km to Norte.

Ignore the sign on the left to the chapel, and go straight on to the turning area. Take the left drive about 200 m gravel road, then turn right down the hill between the houses.

At the house with the millstone you will get the key for the Vivenda Bea.

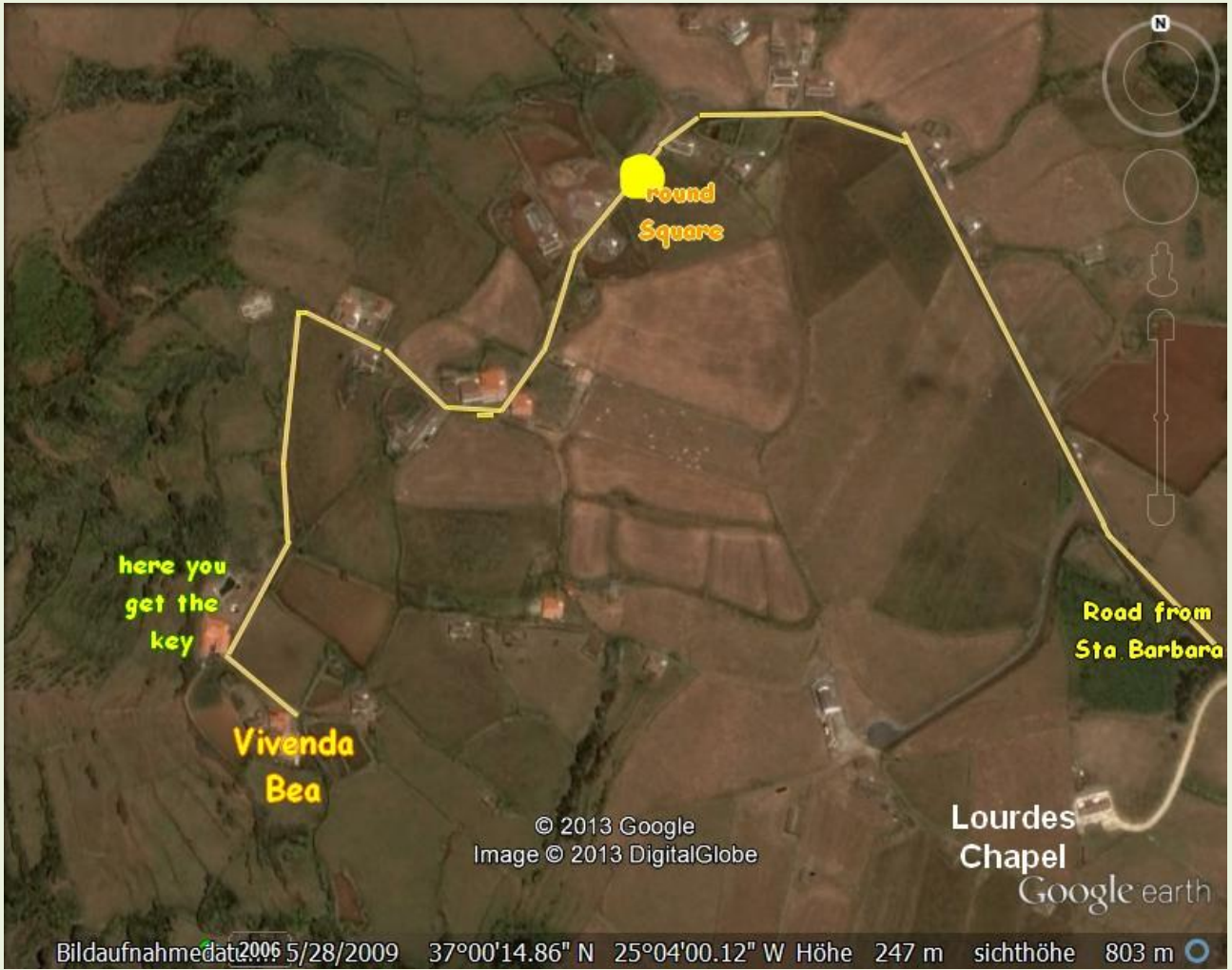
Phone: 00351 296 886 350.

GPS coordinates :

N 37 degrees 00.186 minutes,

W 025 degrees 04.131 minutes.





Round Square: Left at this blue gate



At the semi-detached ruin left follow the unpaved road

